

# 2-BEDROOM +STUDY

## TYPE B1-G

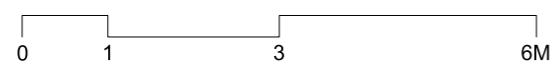
77m<sup>2</sup> / 829ft<sup>2</sup>  
(inclusive of 9m<sup>2</sup> PES  
& 4m<sup>2</sup> AC Ledge)

Blk 19, #01-40

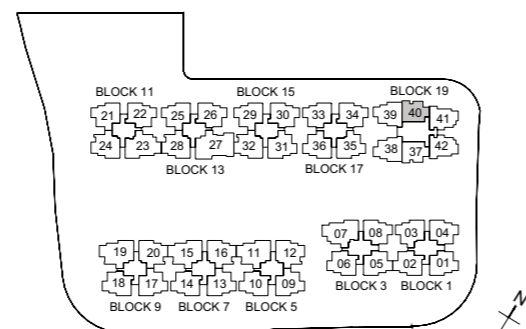


### Legend

W - Washer F - Fridge DB - Distribution Board



ALL PLANS ARE SUBJECT TO CHANGES BY THE RELEVANT AUTHORITIES.  
MEASUREMENTS ARE APPROXIMATE ONLY AND SUBJECT TO FINAL SURVEY.  
INFORMATION ACCURATE AT THE POINT OF PRINTING.  
BP No.: A0712-05181-2018-BP01 (Dated 2 Dec 2019)

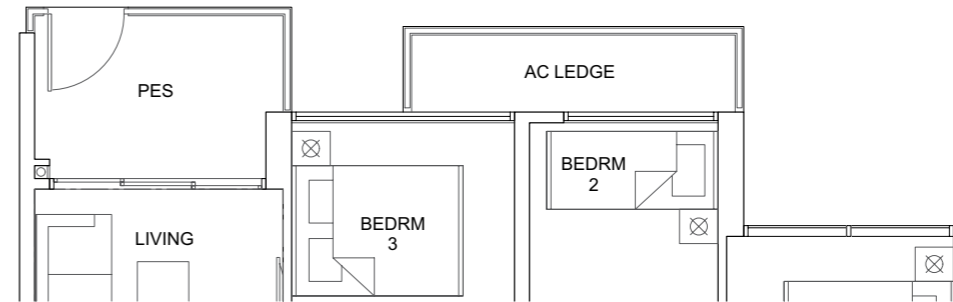


# 3-BEDROOM

## TYPE C1-G

76m<sup>2</sup> / 818ft<sup>2</sup>  
(inclusive of 6m<sup>2</sup> PES  
& 4m<sup>2</sup> AC Ledge)

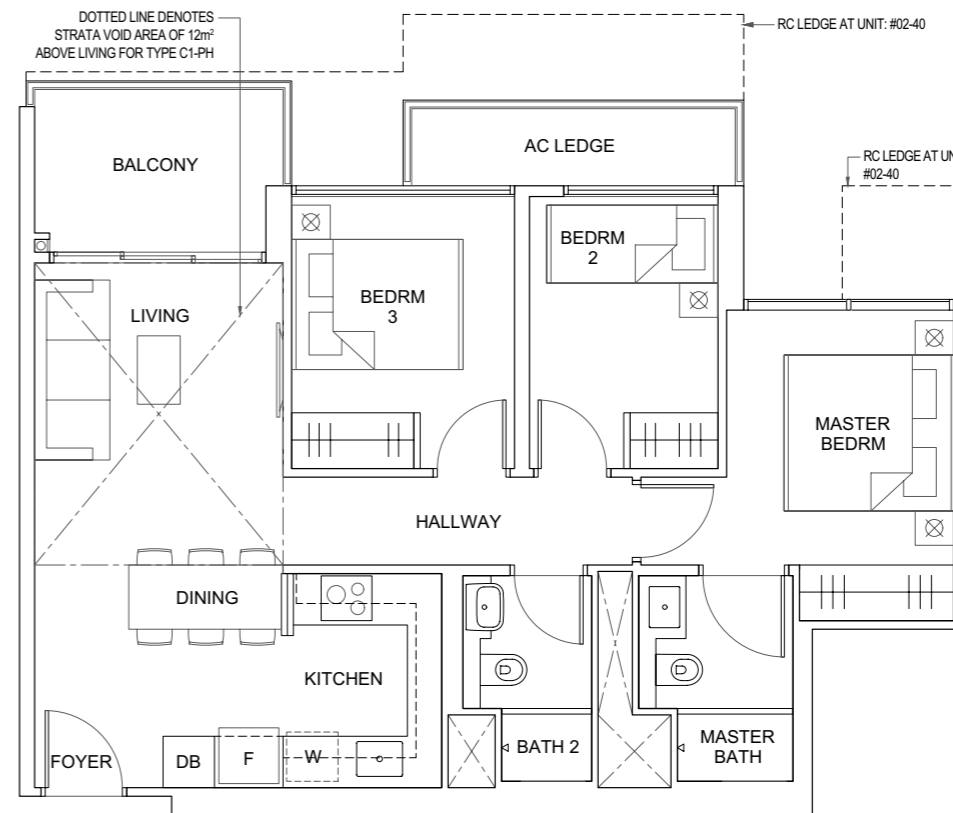
Blk 19, #01-37\*



## TYPE C1

76m<sup>2</sup> / 818ft<sup>2</sup>  
(inclusive of 6m<sup>2</sup> Balcony  
& 4m<sup>2</sup> AC Ledge)

Blk 19, #02-37\* to #12-37\*  
#02-40 to #12-40



## TYPE C1-PH

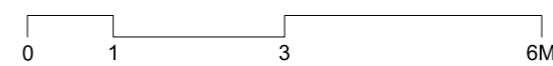
88m<sup>2</sup> / 947ft<sup>2</sup>  
(inclusive of 6m<sup>2</sup> Balcony  
& 4m<sup>2</sup> AC Ledge  
& 12m<sup>2</sup> Void over Living)

Blk 19, #13-37\*  
#13-40

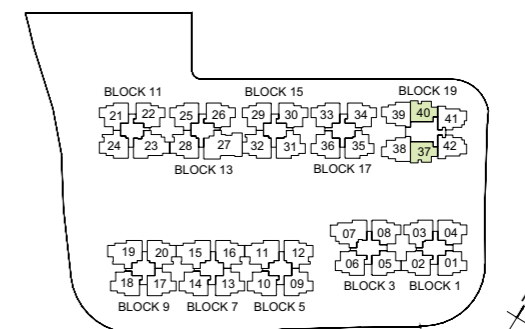
\* Mirrored unit

### Legend

W - Washer F - Fridge DB - Distribution Board



ALL PLANS ARE SUBJECT TO CHANGES BY THE RELEVANT AUTHORITIES.  
MEASUREMENTS ARE APPROXIMATE ONLY AND SUBJECT TO FINAL SURVEY.  
INFORMATION ACCURATE AT THE POINT OF PRINTING.  
BP No.: A0712-05181-2018-BP01 (Dated 2 Dec 2019)

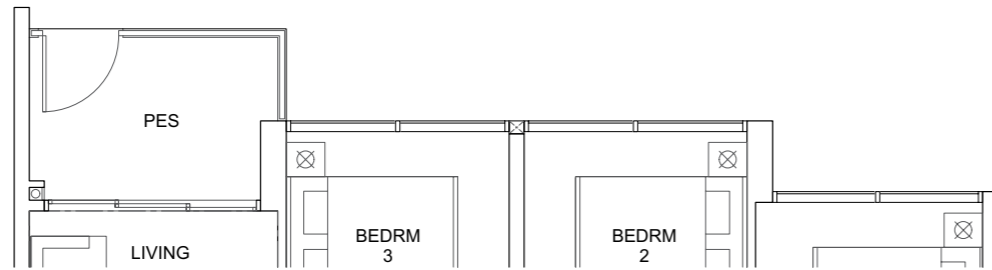


# 3-BEDROOM

## TYPE C2-G

82m<sup>2</sup> / 883ft<sup>2</sup>  
(inclusive of 6m<sup>2</sup> PES  
& 5m<sup>2</sup> AC Ledge)

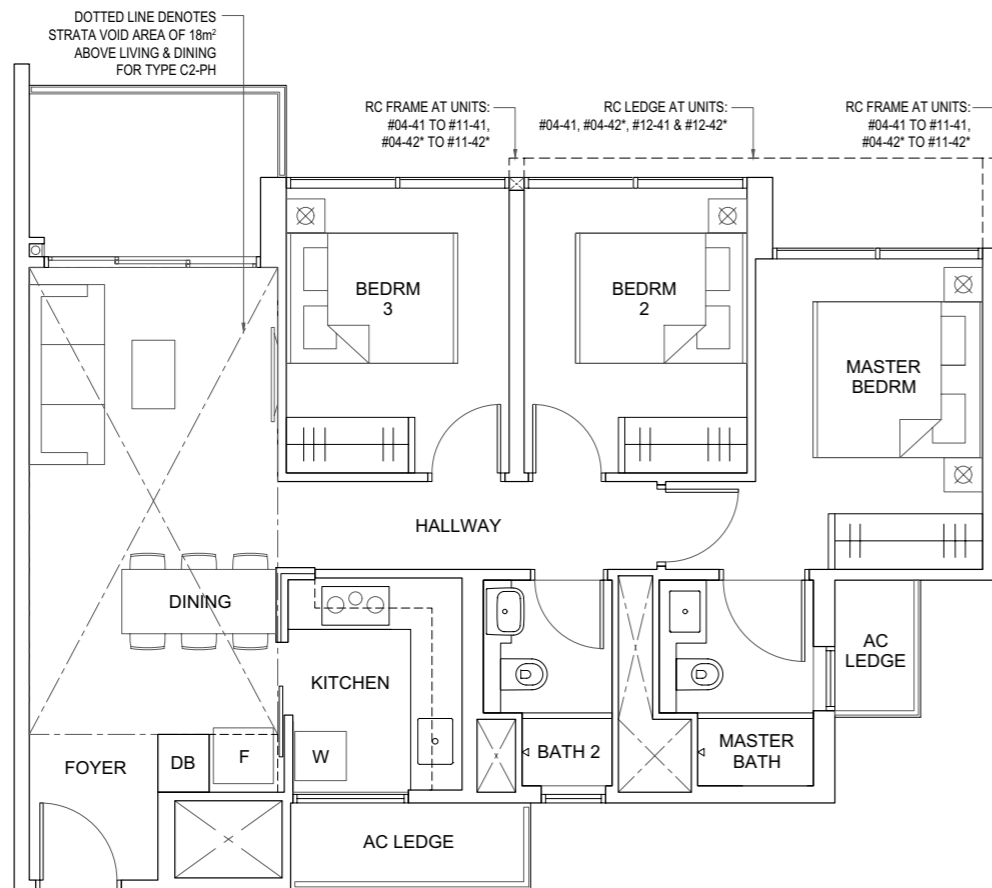
Blk 19, #01-41  
#01-42\*



## TYPE C2

82m<sup>2</sup> / 883ft<sup>2</sup>  
(inclusive of 6m<sup>2</sup> Balcony  
& 5m<sup>2</sup> AC Ledge)

Blk 19, #02-41 to #12-41  
#02-42\* to #12-42\*



## TYPE C2-PH

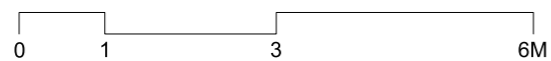
100m<sup>2</sup> / 1076ft<sup>2</sup>  
(inclusive of 6m<sup>2</sup> Balcony  
& 5m<sup>2</sup> AC Ledge &  
18m<sup>2</sup> Void over  
Living & Dining)

Blk 19, #13-41  
#13-42\*

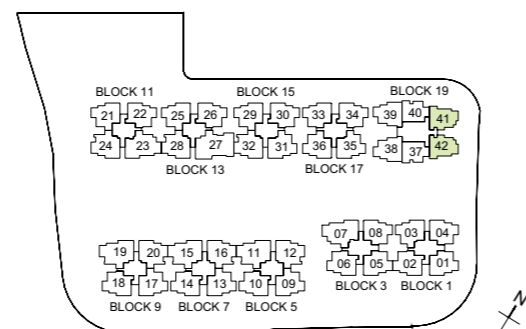
\* Mirrored unit

### Legend

W - Washer F - Fridge DB - Distribution Board



ALL PLANS ARE SUBJECT TO CHANGES BY THE RELEVANT AUTHORITIES.  
MEASUREMENTS ARE APPROXIMATE ONLY AND SUBJECT TO FINAL SURVEY.  
INFORMATION ACCURATE AT THE POINT OF PRINTING.  
BP No.: A0712-05181-2018-BP01 (Dated 2 Dec 2019)

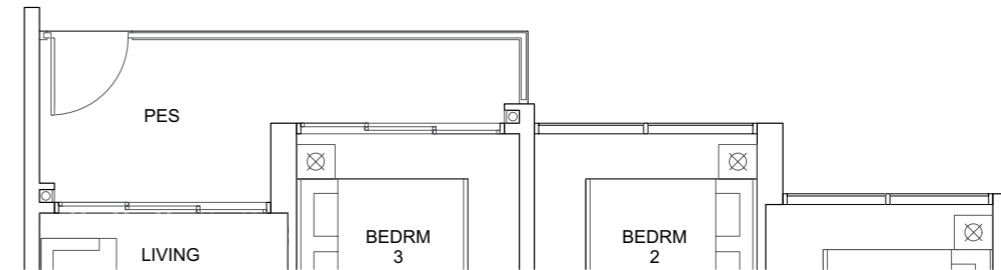


# 3-BEDROOM

## TYPE C3-G

86m<sup>2</sup> / 926ft<sup>2</sup>  
(inclusive of 9m<sup>2</sup> PES  
& 4m<sup>2</sup> AC Ledge)

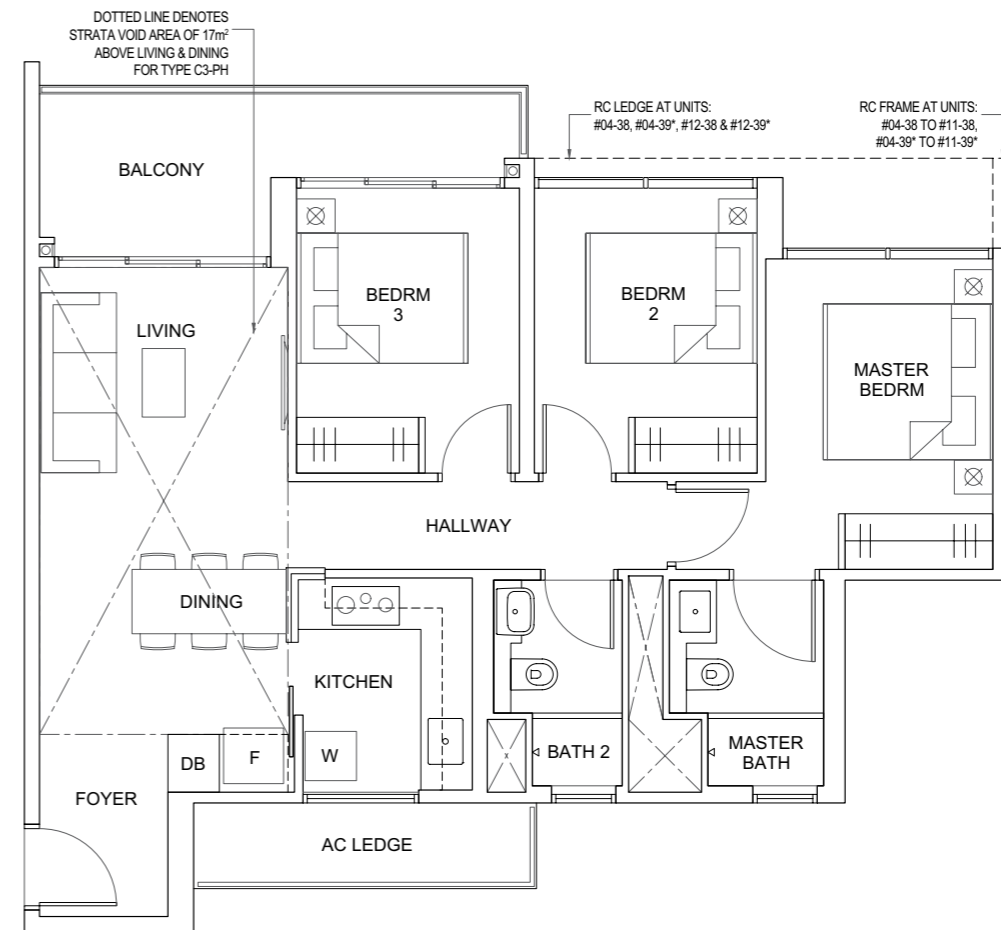
Blk 19, #01-38  
#01-39\*



## TYPE C3

86m<sup>2</sup> / 926ft<sup>2</sup>  
(inclusive of 9m<sup>2</sup> Balcony  
& 4m<sup>2</sup> AC Ledge)

Blk 19, #02-38 to #12-38  
#02-39\* to #12-39\*



## TYPE C3-PH

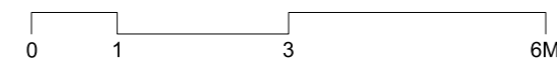
103m<sup>2</sup> / 1109ft<sup>2</sup>  
(inclusive of 9m<sup>2</sup> Balcony  
& 4m<sup>2</sup> AC Ledge &  
17m<sup>2</sup> Void over  
Living & Dining)

Blk 19, #13-38  
#13-39\*

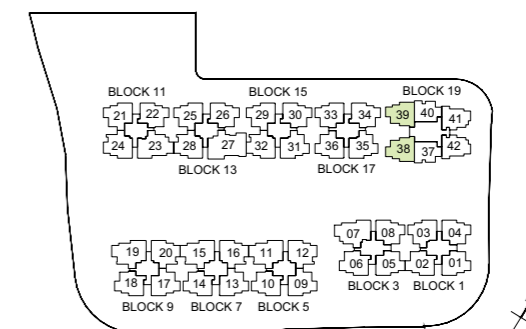
\* Mirrored unit

### Legend

W - Washer F - Fridge DB - Distribution Board



ALL PLANS ARE SUBJECT TO CHANGES BY THE RELEVANT AUTHORITIES.  
MEASUREMENTS ARE APPROXIMATE ONLY AND SUBJECT TO FINAL SURVEY.  
INFORMATION ACCURATE AT THE POINT OF PRINTING.  
BP No.: A0712-05181-2018-BP01 (Dated 2 Dec 2019)

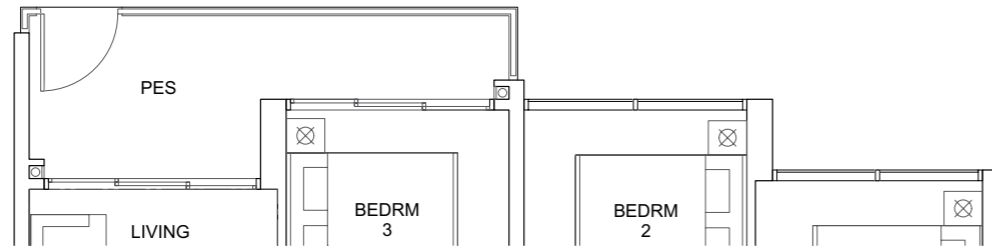


# 3-BEDROOM +STUDY

## TYPE C4-G

86m<sup>2</sup> / 926ft<sup>2</sup>  
(inclusive of 9m<sup>2</sup> PES  
& 5m<sup>2</sup> AC Ledge)

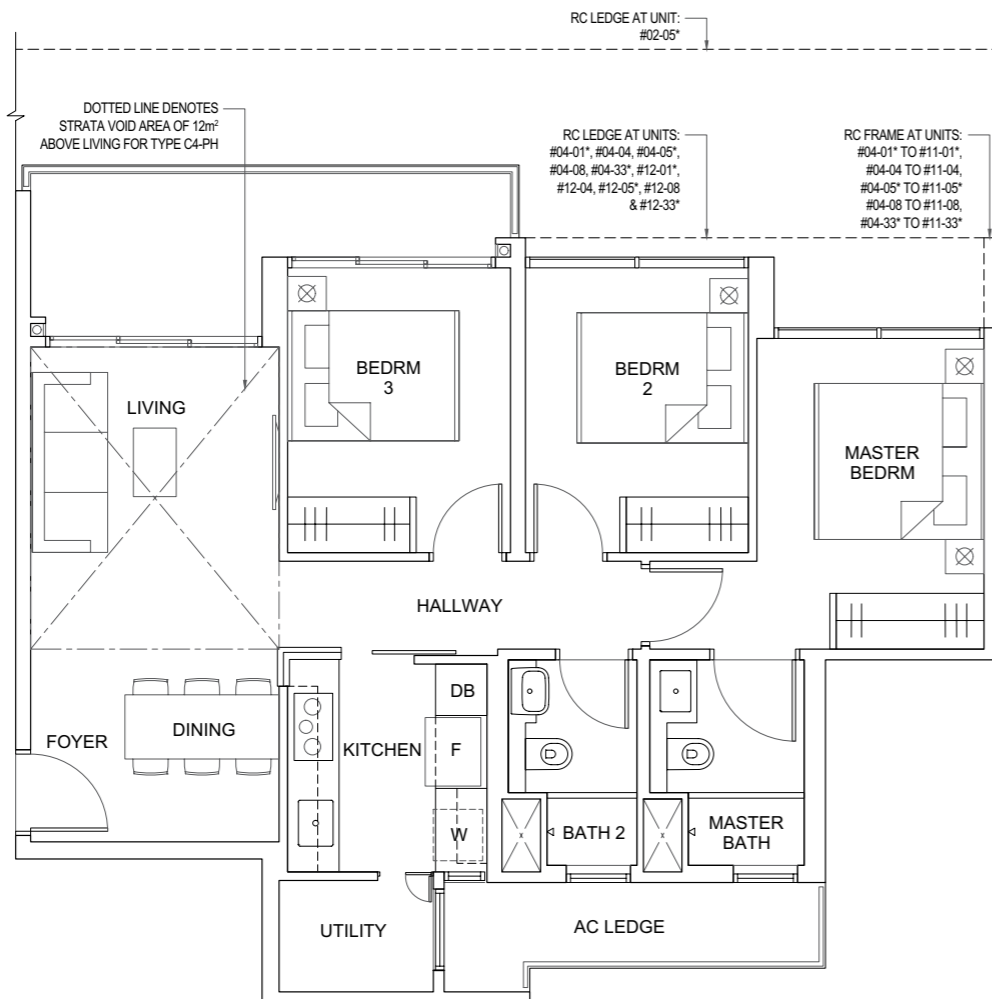
Blk 1, #01-01\*  
#01-04  
Blk 3, #01-08  
Blk 17, #01-33\*



## TYPE C4

86m<sup>2</sup> / 926ft<sup>2</sup>  
(inclusive of 9m<sup>2</sup> Balcony  
& 5m<sup>2</sup> AC Ledge)

Blk 1, #02-01\* to #12-01\*  
#02-04 to #12-04  
Blk 3, #02-05\* to #12-05\*  
#02-08 to #12-08  
Blk 17, #02-33\* to #12-33\*



## TYPE C4-PH

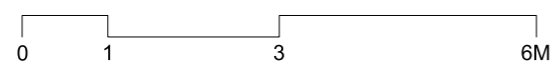
98m<sup>2</sup> / 1055ft<sup>2</sup>  
(inclusive of 9m<sup>2</sup> Balcony  
& 5m<sup>2</sup> AC Ledge  
& 12m<sup>2</sup> Void over Living)

Blk 1, #13-01\*  
#13-04  
Blk 3, #13-05\*  
#13-08  
Blk 17, #13-33\*

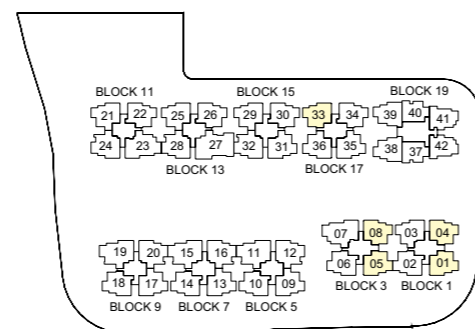
\* Mirrored unit

### Legend

W - Washer F - Fridge DB - Distribution Board



ALL PLANS ARE SUBJECT TO CHANGES BY THE RELEVANT AUTHORITIES.  
MEASUREMENTS ARE APPROXIMATE ONLY AND SUBJECT TO FINAL SURVEY.  
INFORMATION ACCURATE AT THE POINT OF PRINTING.  
BP No.: A0712-05181-2018-BP01 (Dated 2 Dec 2019)

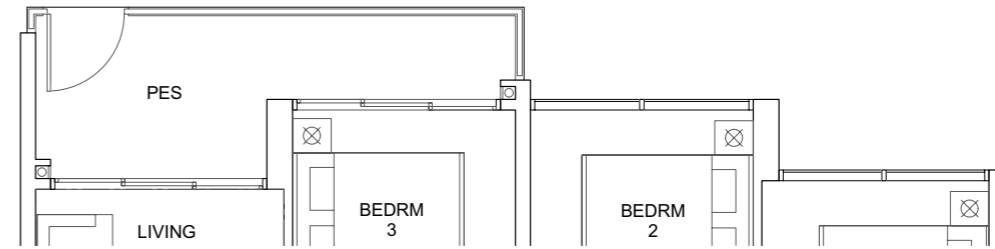


# 3-BEDROOM +STUDY

## TYPE C5-G

88m<sup>2</sup> / 947ft<sup>2</sup>  
(inclusive of 9m<sup>2</sup> PES  
& 5m<sup>2</sup> AC Ledge)

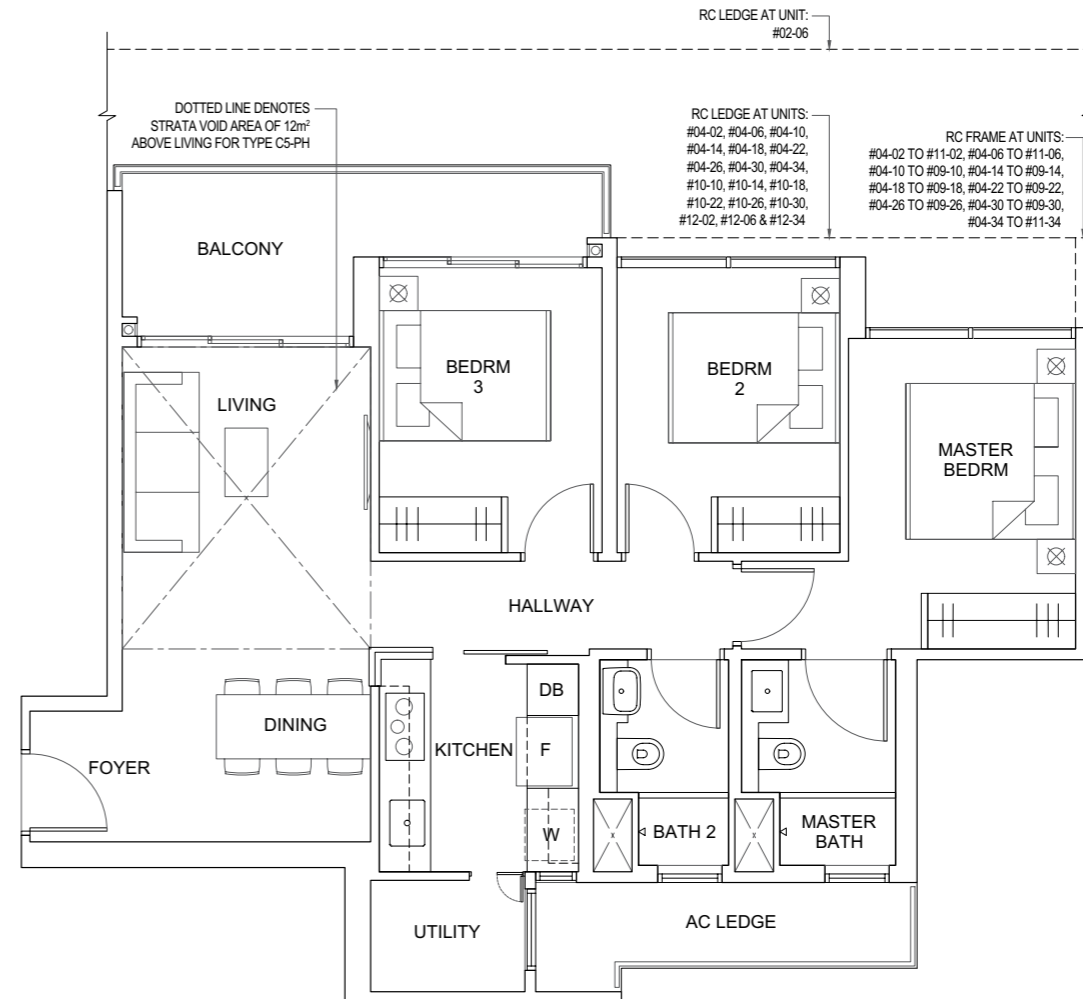
Blk 1, #01-02  
Blk 5, #01-10  
Blk 7, #01-14  
Blk 9, #01-18  
Blk 11, #01-22  
Blk 13, #01-26  
Blk 15, #01-30  
Blk 17, #01-34



## TYPE C5

88m<sup>2</sup> / 947ft<sup>2</sup>  
(inclusive of 9m<sup>2</sup> Balcony  
& 5m<sup>2</sup> AC Ledge)

Blk 1, #02-02 to #12-02  
Blk 3, #02-06 to #12-06  
Blk 5, #02-10 to #10-10  
Blk 7, #02-14 to #10-14  
Blk 9, #02-18 to #10-18  
Blk 11, #02-22 to #10-22  
Blk 13, #02-26 to #10-26  
Blk 15, #02-30 to #10-30  
Blk 17, #02-34 to #12-34



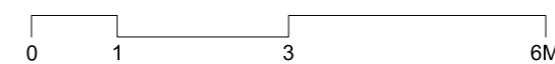
## TYPE C5-PH

100m<sup>2</sup> / 1076ft<sup>2</sup>  
(inclusive of 9m<sup>2</sup> Balcony  
& 5m<sup>2</sup> AC Ledge  
& 12m<sup>2</sup> Void over Living)

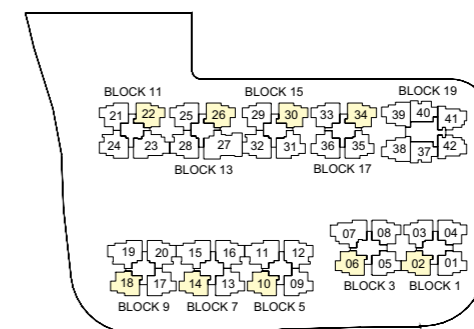
Blk 1, #13-02  
Blk 3, #13-06  
Blk 5, #11-10  
Blk 7, #11-14  
Blk 9, #11-18  
Blk 11, #11-22  
Blk 13, #11-26  
Blk 15, #11-30  
Blk 17, #13-34

### Legend

W - Washer F - Fridge DB - Distribution Board



ALL PLANS ARE SUBJECT TO CHANGES BY THE RELEVANT AUTHORITIES.  
MEASUREMENTS ARE APPROXIMATE ONLY AND SUBJECT TO FINAL SURVEY.  
INFORMATION ACCURATE AT THE POINT OF PRINTING.  
BP No.: A0712-05181-2018-BP01 (Dated 2 Dec 2019)

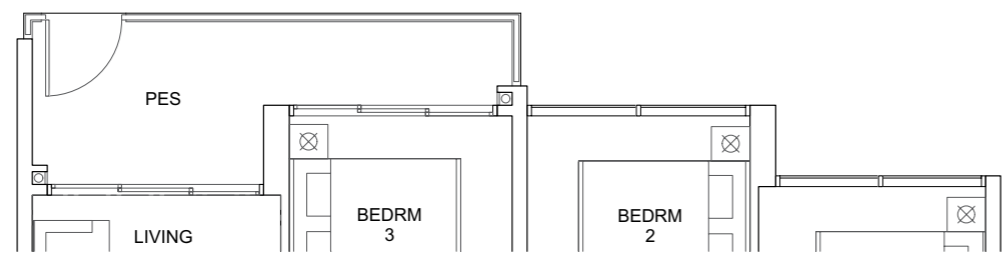


**3-BEDROOM  
+UTILITY  
+YARD**

**TYPE C6-G**

88m<sup>2</sup> / 947ft<sup>2</sup>  
(inclusive of 9m<sup>2</sup> PES  
& 5m<sup>2</sup> AC Ledge)

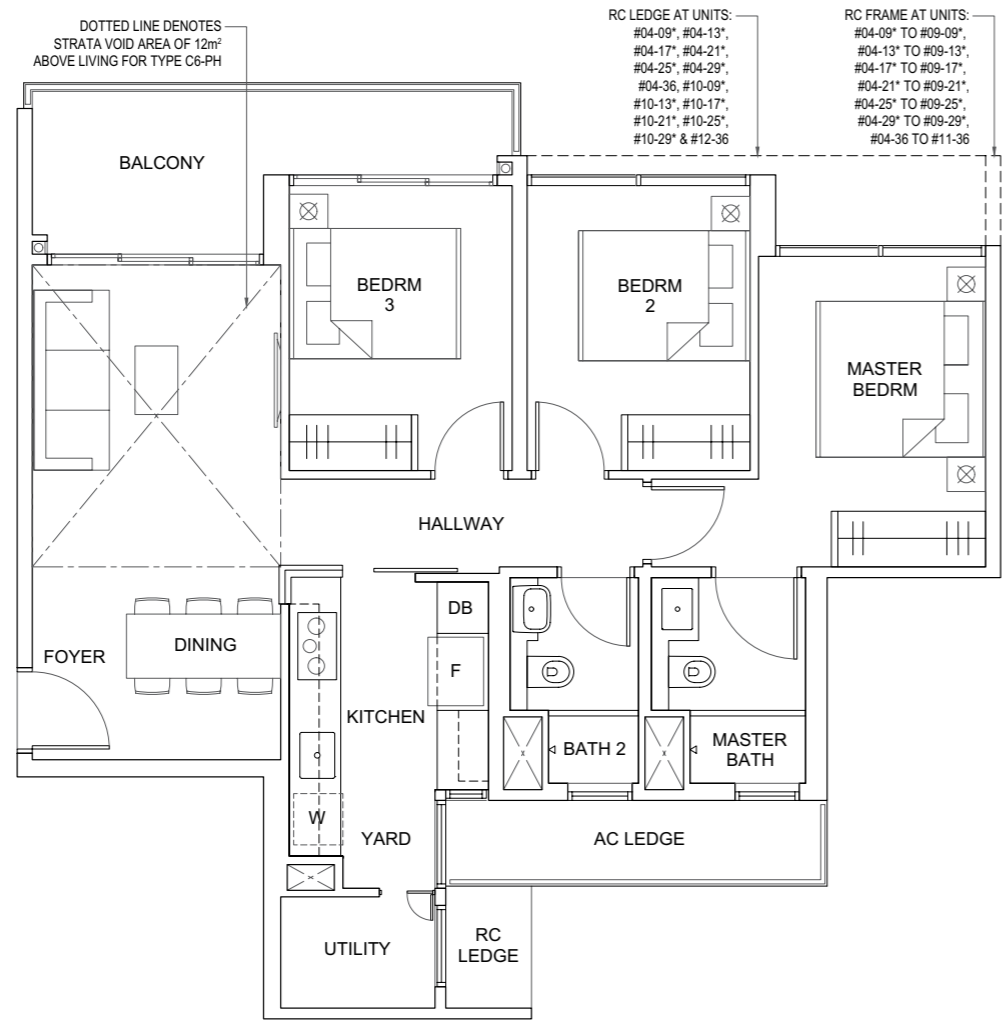
- Blk 5, #01-09\*
- Blk 7, #01-13\*
- Blk 9, #01-17\*
- Blk 11, #01-21\*
- Blk 13, #01-25\*
- Blk 15, #01-29\*
- Blk 17, #01-36



**TYPE C6**

88m<sup>2</sup> / 947ft<sup>2</sup>  
(inclusive of 9m<sup>2</sup> Balcony  
& 5m<sup>2</sup> AC Ledge)

- Blk 5, #02-09\* to #10-09\*
- Blk 7, #02-13\* to #10-13\*
- Blk 9, #02-17\* to #10-17\*
- Blk 11, #02-21\* to #10-21\*
- Blk 13, #02-25\* to #10-25\*
- Blk 15, #02-29\* to #10-29\*
- Blk 17, #02-36 to #12-36

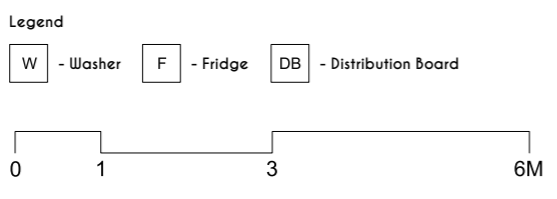


**TYPE C6-PH**

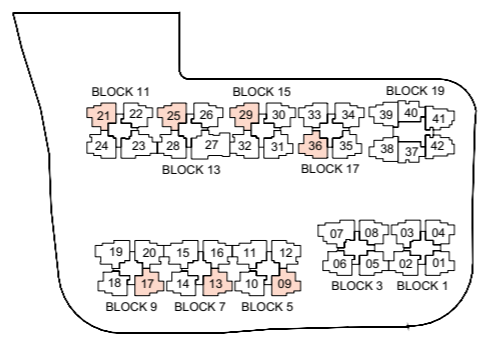
100m<sup>2</sup> / 1076ft<sup>2</sup>  
(inclusive of 9m<sup>2</sup> Balcony  
& 5m<sup>2</sup> AC Ledge  
& 12m<sup>2</sup> Void over Living)

- Blk 5, #11-09\*
- Blk 7, #11-13\*
- Blk 9, #11-17\*
- Blk 11, #11-21\*
- Blk 13, #11-25\*
- Blk 15, #11-29\*
- Blk 17, #13-36

\* Mirrored unit



ALL PLANS ARE SUBJECT TO CHANGES BY THE RELEVANT AUTHORITIES.  
MEASUREMENTS ARE APPROXIMATE ONLY AND SUBJECT TO FINAL SURVEY.  
INFORMATION ACCURATE AT THE POINT OF PRINTING.  
BP No.: A0712-05181-2018-BP01 (Dated 2 Dec 2019)

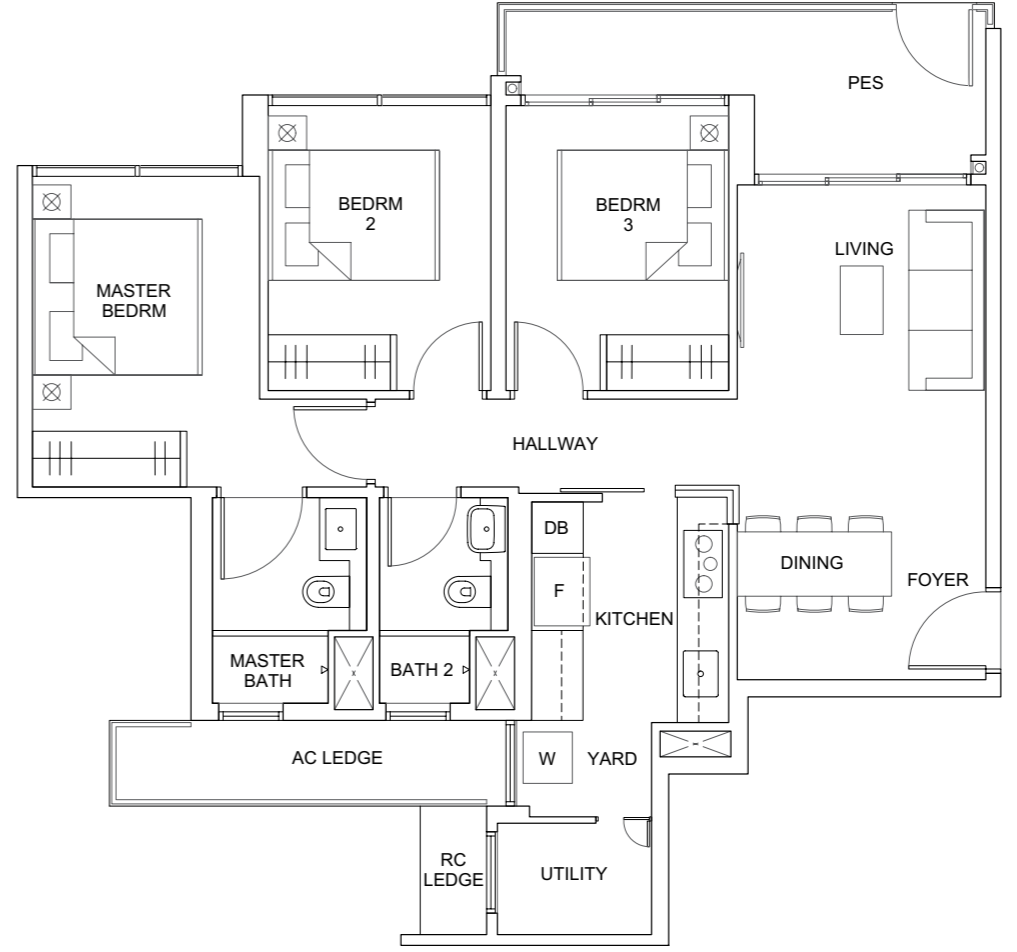


**3-BEDROOM  
+UTILITY  
+YARD**

**TYPE C7-G**

88m<sup>2</sup> / 947ft<sup>2</sup>  
(inclusive of 9m<sup>2</sup> PES  
& 5m<sup>2</sup> AC Ledge)

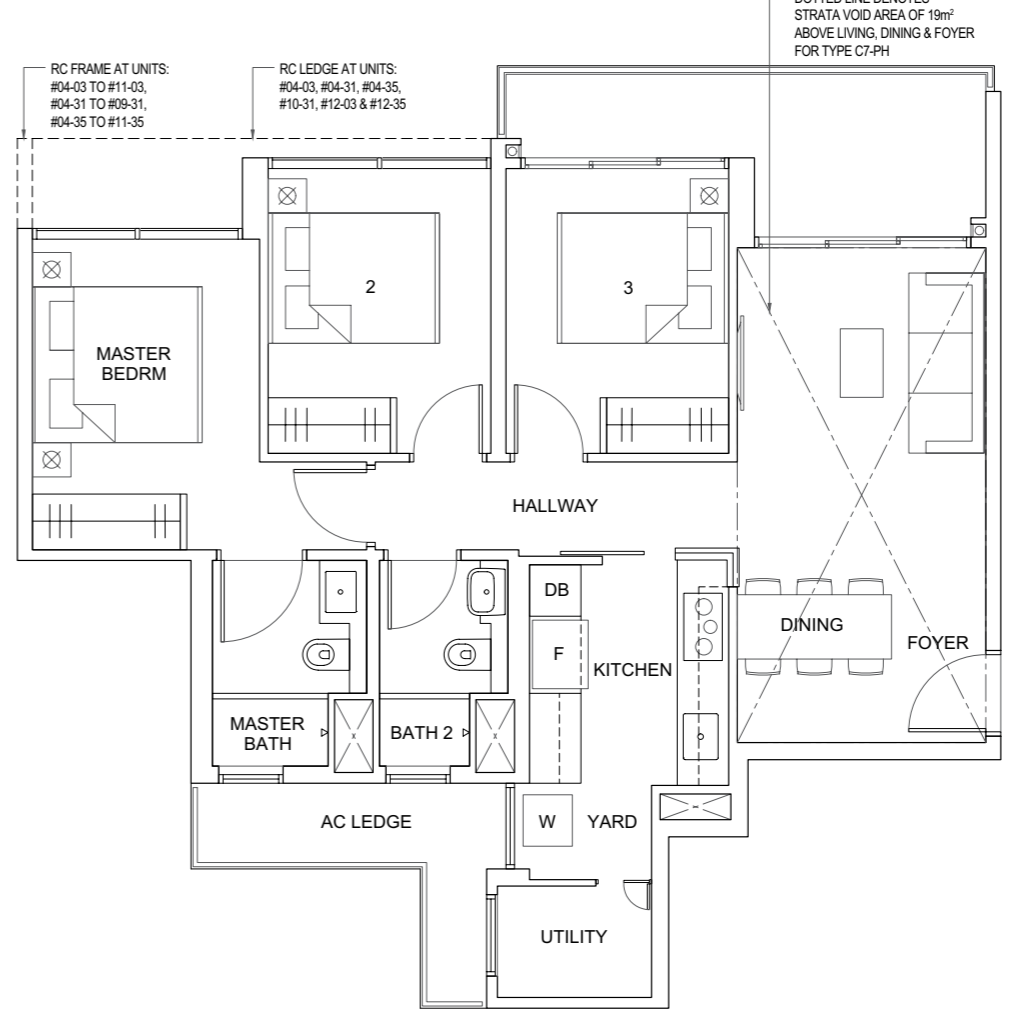
- Blk 1, #01-03
- Blk 15, #01-31
- Blk 17, #01-35



**TYPE C7**

89m<sup>2</sup> / 958ft<sup>2</sup>  
(inclusive of 9m<sup>2</sup> Balcony  
& 5m<sup>2</sup> AC Ledge)

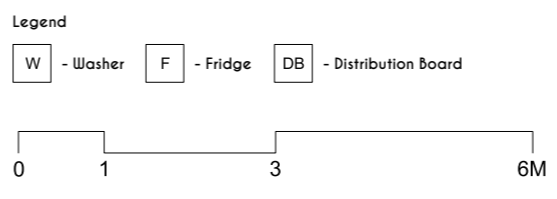
- Blk 1, #02-03 to #12-03
- Blk 15, #02-31 to #10-31
- Blk 17, #02-35 to #12-35



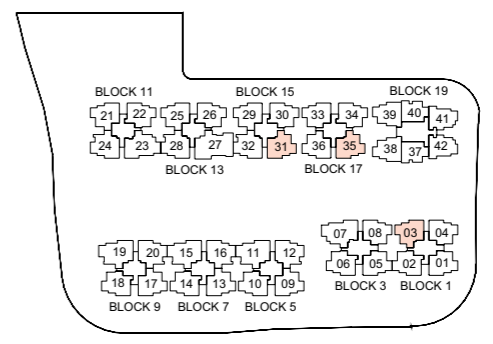
**TYPE C7-PH**

108m<sup>2</sup> / 1163ft<sup>2</sup>  
(inclusive of 9m<sup>2</sup> Balcony  
& 5m<sup>2</sup> AC Ledge  
& 19m<sup>2</sup> Void over Living,  
Dining & Foyer)

- Blk 1, #13-03
- Blk 15, #11-31
- Blk 17, #13-35



ALL PLANS ARE SUBJECT TO CHANGES BY THE RELEVANT AUTHORITIES.  
MEASUREMENTS ARE APPROXIMATE ONLY AND SUBJECT TO FINAL SURVEY.  
INFORMATION ACCURATE AT THE POINT OF PRINTING.  
BP No.: A0712-05181-2018-BP01 (Dated 2 Dec 2019)

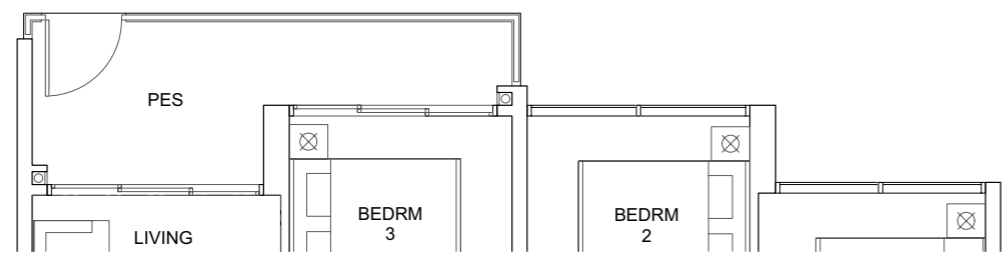


**3-BEDROOM  
+UTILITY  
+YARD**

**TYPE C8-G**

93m<sup>2</sup> / 1001ft<sup>2</sup>  
(inclusive of 9m<sup>2</sup> PES  
& 5m<sup>2</sup> AC Ledge)

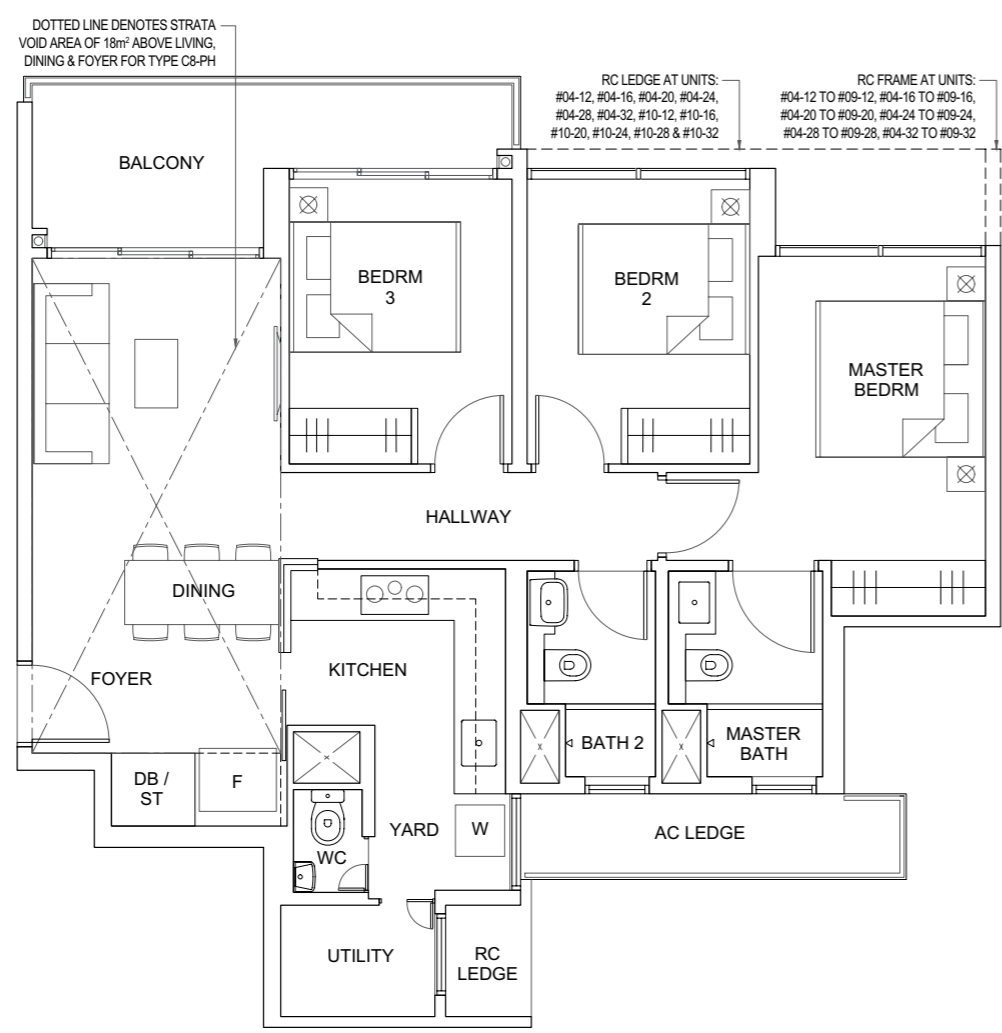
- Blk 5, #01-12
- Blk 7, #01-16
- Blk 9, #01-20
- Blk 11, #01-24
- Blk 13, #01-28
- Blk 15, #01-32



**TYPE C8**

93m<sup>2</sup> / 1001ft<sup>2</sup>  
(inclusive of 9m<sup>2</sup> Balcony  
& 5m<sup>2</sup> AC Ledge)

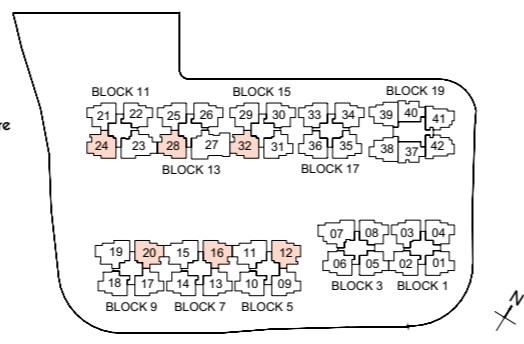
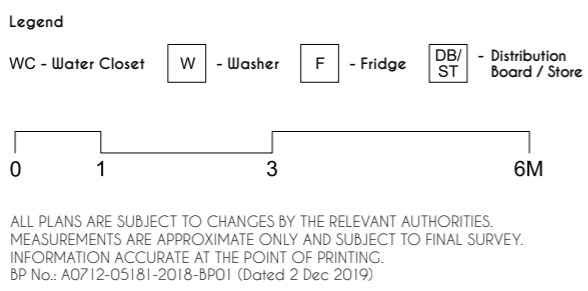
- Blk 5, #02-12 to #10-12
- Blk 7, #02-16 to #10-16
- Blk 9, #02-20 to #10-20
- Blk 11, #02-24 to #10-24
- Blk 13, #02-28 to #10-28
- Blk 15, #02-32 to #10-32



**TYPE C8-PH**

111m<sup>2</sup> / 1195ft<sup>2</sup>  
(inclusive of 9m<sup>2</sup> Balcony  
& 5m<sup>2</sup> AC Ledge  
& 18m<sup>2</sup> Void over Living,  
Dining & Foyer)

- Blk 5, #11-12
- Blk 7, #11-16
- Blk 9, #11-20
- Blk 11, #11-24
- Blk 13, #11-28
- Blk 15, #11-32

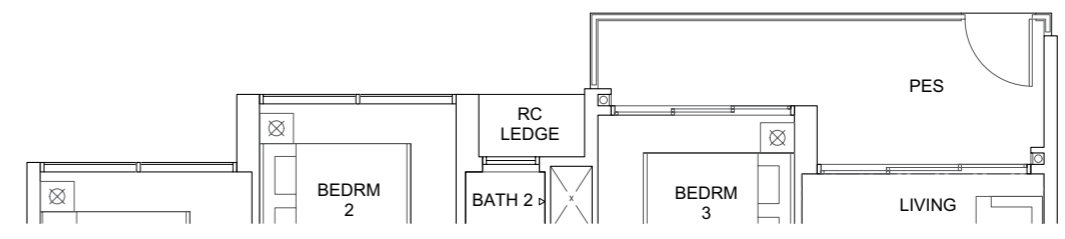


**4-BEDROOM  
+UTILITY  
+YARD**

**TYPE D1-G**

107m<sup>2</sup> / 1152ft<sup>2</sup>  
(inclusive of 10m<sup>2</sup> PES  
& 5m<sup>2</sup> AC Ledge)

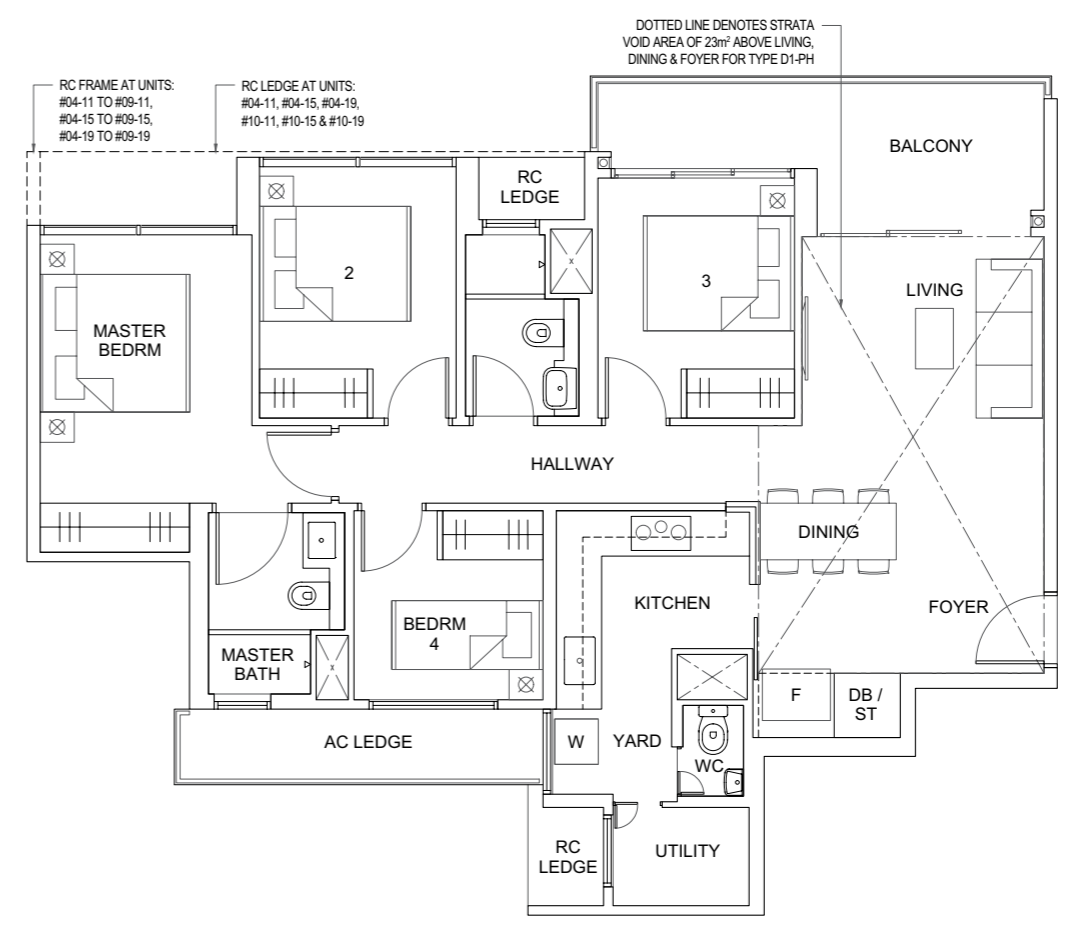
- Blk 5, #01-11
- Blk 7, #01-15
- Blk 9, #01-19



**TYPE D1**

107m<sup>2</sup> / 1152ft<sup>2</sup>  
(inclusive of 10m<sup>2</sup> Balcony  
& 5m<sup>2</sup> AC Ledge)

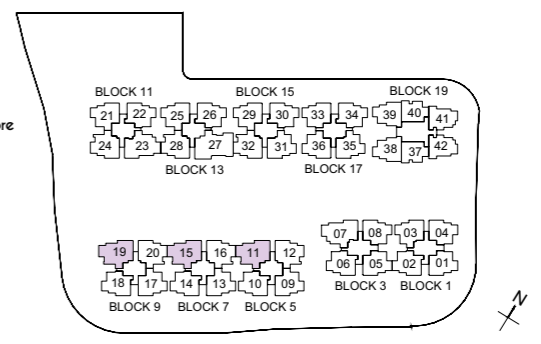
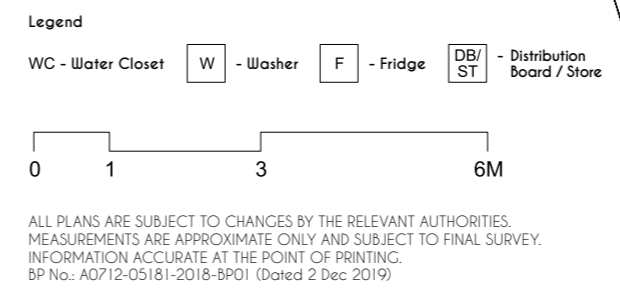
- Blk 5, #02-11 to #10-11
- Blk 7, #02-15 to #10-15
- Blk 9, #02-19 to #10-19



**TYPE D1-PH**

130m<sup>2</sup> / 1399ft<sup>2</sup>  
(inclusive of 10m<sup>2</sup> Balcony  
& 5m<sup>2</sup> AC Ledge  
& 23m<sup>2</sup> Void over Living,  
Dining & Foyer)

- Blk 5, #11-11
- Blk 7, #11-15
- Blk 9, #11-19

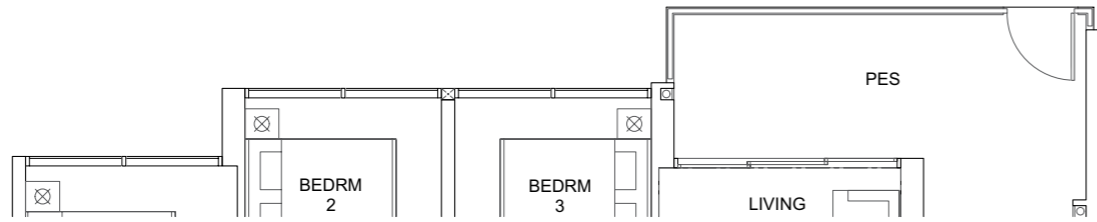


**4-BEDROOM  
+UTILITY  
+YARD**

**TYPE D2-G**

110m<sup>2</sup> / 1184ft<sup>2</sup>  
(inclusive of 13m<sup>2</sup> PES  
& 5m<sup>2</sup> AC Ledge)

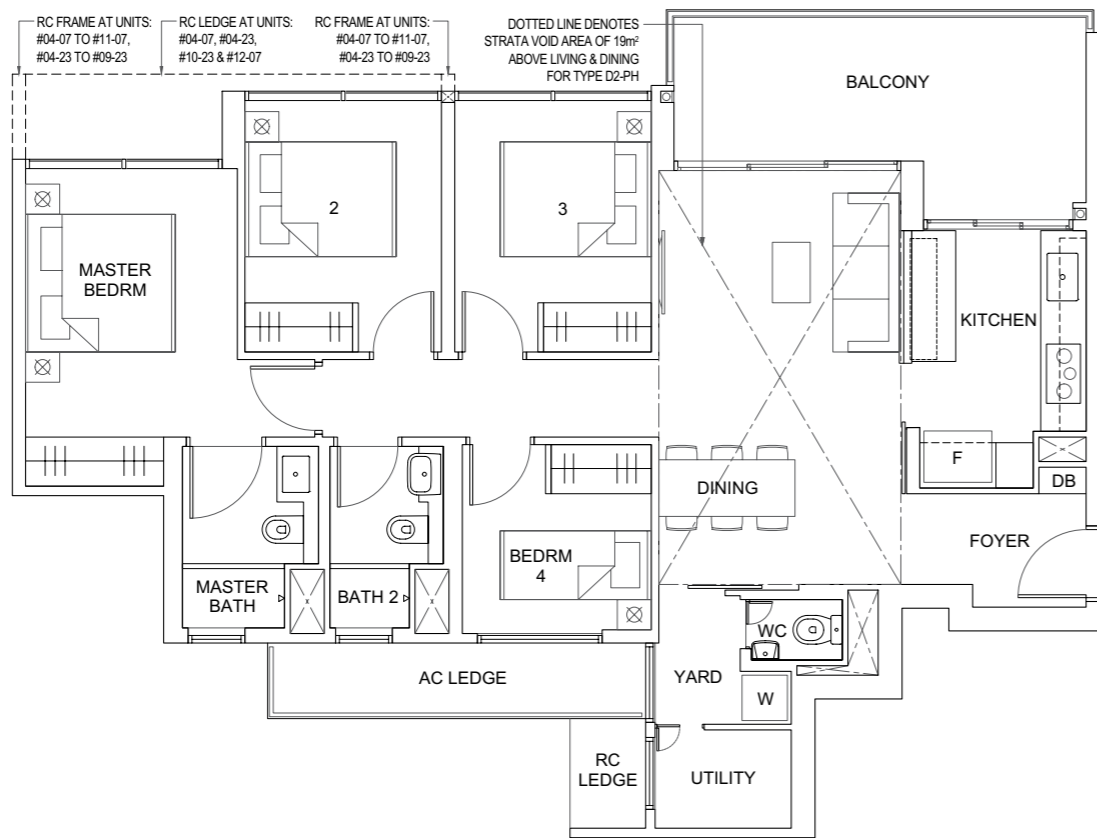
Blk 3, #01-07  
Blk 11, #01-23



**TYPE D2**

110m<sup>2</sup> / 1184ft<sup>2</sup>  
(inclusive of 13m<sup>2</sup> Balcony  
& 5m<sup>2</sup> AC Ledge)

Blk 3, #02-07 to #12-07  
Blk 11, #02-23 to #10-23



**TYPE D2-PH**

129m<sup>2</sup> / 1389ft<sup>2</sup>  
(inclusive of 13m<sup>2</sup> Balcony  
& 5m<sup>2</sup> AC Ledge  
& 19m<sup>2</sup> Void over  
Living & Dining)

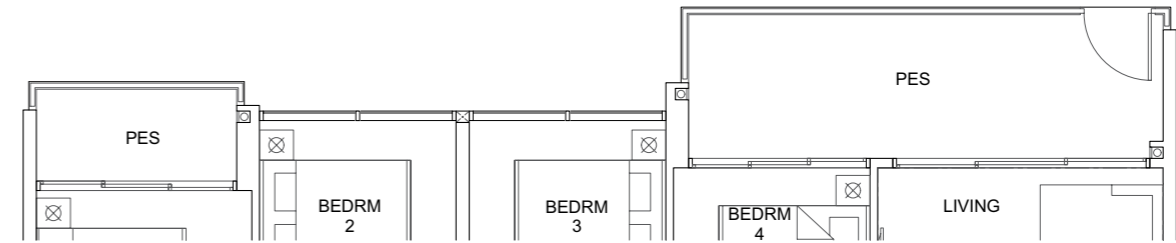
Blk 3, #13-07  
Blk 11, #11-23

**5-BEDROOM  
+UTILITY  
+YARD**

**TYPE E1-G**

135m<sup>2</sup> / 1453ft<sup>2</sup>  
(inclusive of 17m<sup>2</sup> PES  
& 6m<sup>2</sup> AC ledge)

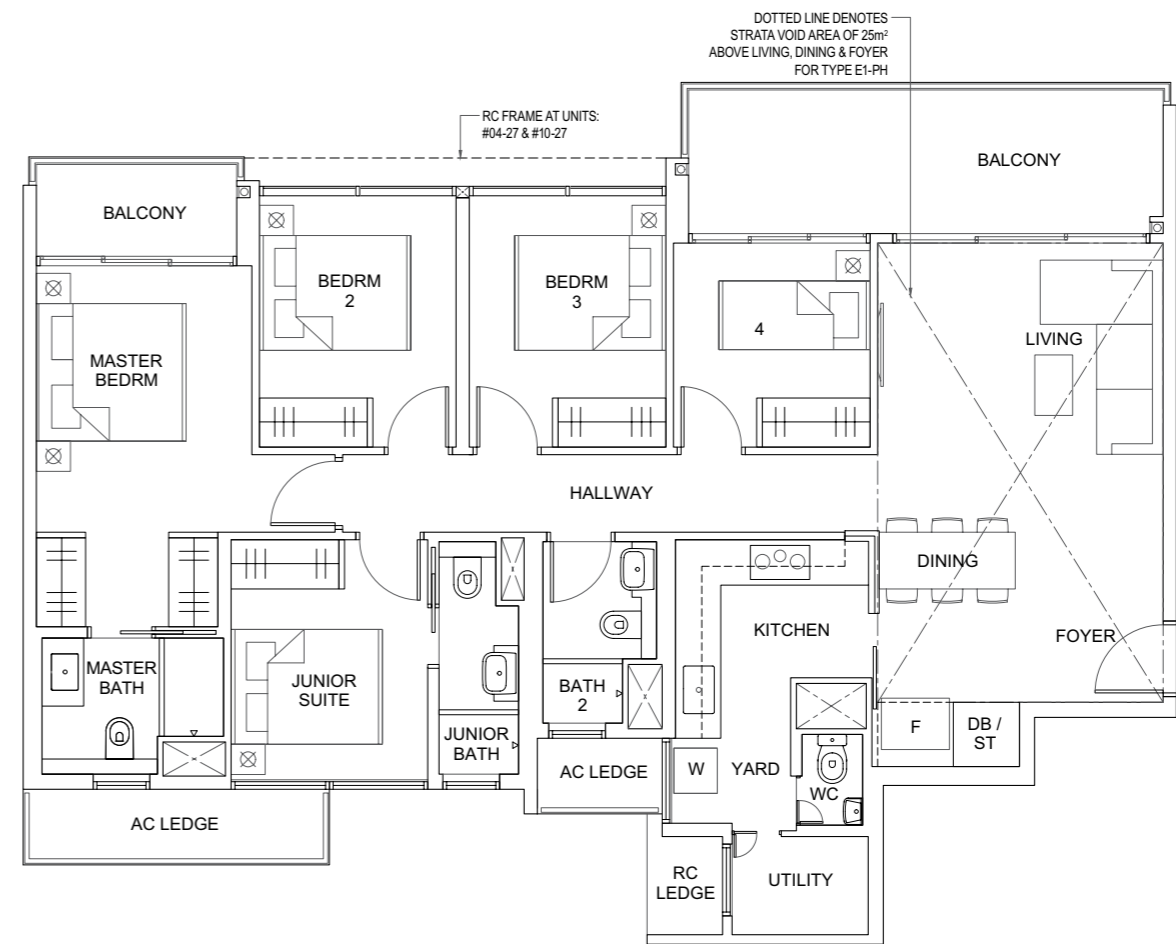
Blk 13, #01-27



**TYPE E1**

135m<sup>2</sup> / 1453ft<sup>2</sup>  
(inclusive of 17m<sup>2</sup> Balcony  
& 6m<sup>2</sup> AC ledge)

Blk 13, #02-27 to #10-27



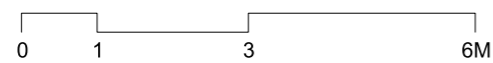
**TYPE E1-PH**

160m<sup>2</sup> / 1722ft<sup>2</sup>  
(inclusive of 17m<sup>2</sup> Balcony  
& 6m<sup>2</sup> AC ledge  
& 25m<sup>2</sup> Void over Living,  
Dining & Foyer)

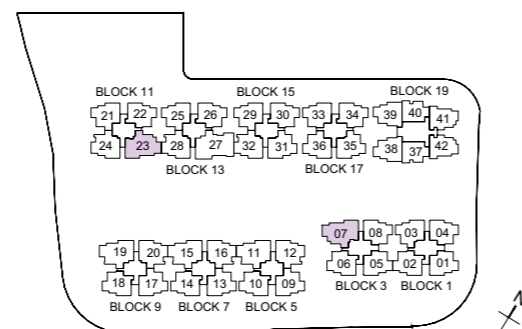
Blk 13, #11-27

**Legend**

WC - Water Closet W - Washer F - Fridge DB - Distribution Board

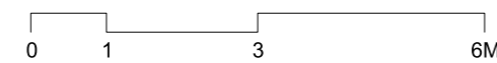


ALL PLANS ARE SUBJECT TO CHANGES BY THE RELEVANT AUTHORITIES.  
MEASUREMENTS ARE APPROXIMATE ONLY AND SUBJECT TO FINAL SURVEY.  
INFORMATION ACCURATE AT THE POINT OF PRINTING.  
BP No.: A0712-05181-2018-BP01 (Dated 2 Dec 2019)



**Legend**

WC - Water Closet W - Washer F - Fridge DB/ST - Distribution Board / Store



ALL PLANS ARE SUBJECT TO CHANGES BY THE RELEVANT AUTHORITIES.  
MEASUREMENTS ARE APPROXIMATE ONLY AND SUBJECT TO FINAL SURVEY.  
INFORMATION ACCURATE AT THE POINT OF PRINTING.  
BP No.: A0712-05181-2018-BP01 (Dated 2 Dec 2019)

